



ST-35

Multiple Point Optic Sensing Overfill Prevention Controller

Featuring Dynacheck® – Automatic and Continuous Self-Checking Circuitry



ST-35



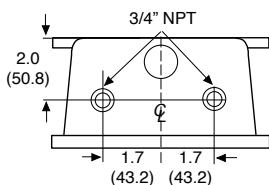
DESCRIPTION

The ST-35 is for use with Scully 5-Wire Optic Sensors, Model SP-FU series. It can monitor up to twelve of these sensors in a “series” signal path. If any one of the connected sensors senses liquid, the ST-35 will respond to this “wet” condition; output relay contact opens and red light turns on. Although its typical application is monitoring of sensors mounted on multi-compartment vehicles, it can also be used for high level detection in storage tanks (tank farms). One relay output contact is provided, which opens if any sensor detects liquid. ST-35 is also used with vehicles equipped with Scully’s IntelliCheck® series or Load Anywhere® Overfill Prevention Monitors. It interfaces with the 5-wire optic socket(s) on these vehicles. The Control Unit has an explosion proof enclosure for mounting in locations that are classified as hazardous. For additional ground proving options, the system works in conjunction with the Scully Groundhog Self-Proving Ground Verification System.

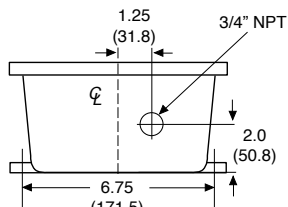
FEATURES AND BENEFITS

- Maximum safety with Dynacheck® automatic and continuous self-checking circuitry.
- Will not permit loading under any fault or wet sensor condition.
- Signals for automatic shut off of product flow within a half-second of detecting a potential overfill condition.
- Complete compatibility with Scully IntelliCheck® and Load Anywhere® onboard systems and independent five-wire optic sensors.
- Easy connection to vehicles with rugged, versatile plug and cable units.
- ST-35 models monitor 1 – 12 compartment tank vehicles.
- Approved by Factory Mutual (FM).

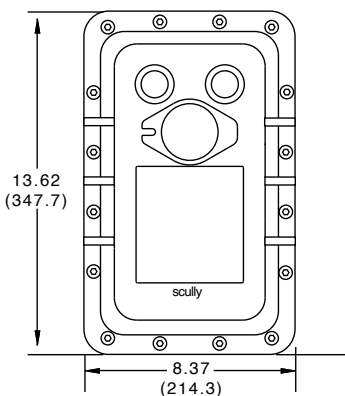
Technical Diagram of Model ST-35 ELK
All Dimensions in Inches (Millimeters in Parenthesis)



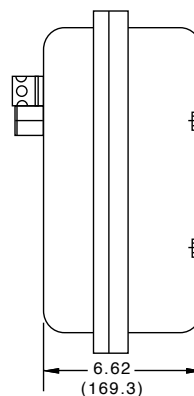
Top View



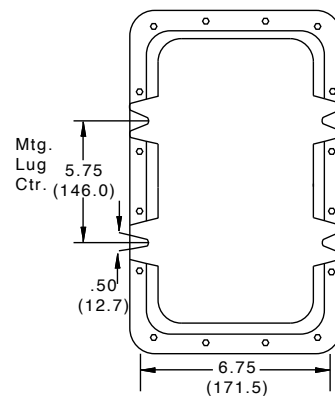
Bottom View



Front View



Side View



Back View



Multiple Point Optic Sensing Overfill Prevention Controller

TECHNICAL SPECIFICATIONS

Temperature Range:	-40° to +140° F (-40° to +60° C).
Weight:	28 lbs. (12.7 kgs.).
Response Time:	Less than 1 second.
Approvals:	Explosion-proof with intrinsically safe sensor connection outputs. Rated for Class I, Division 1, Groups C & D Hazardous Locations, by FM Global (FM) to Canadian and United States standards.
Power Requirements:	ST-35-115 Models: 100-130 VAC, 50/60 Hz. 20 Watts maximum. ST-35-240 Models: 200-250 VAC, 50/60 Hz. 20 Watts maximum.

Connections:	Provided by internal terminal strips.
Output Relay:	One normally open volt-free contact, rated 250 VAC, 5A resistive.
Output Control Fuse:	Internal 5A.
Housing Options:	Consult Scully for optional epoxy painted housings for corrosive atmospheres.

NOTE: For maximum safety, use only in conjunction with sensors manufactured by Scully to not jeopardize the conditions of these approvals.



ORDERING INFORMATION

CONTROL UNITS		
Description		Part Number
ST-35-115-EL Multi-Point Optic Controller		07901
ST-35-115-ELK Multi-Point Optic Controller		07903
ST-35-240-ELK Multi-Point Optic Controller		07931
SYSTEM ACCESSORIES		
SC-6W Sculcon Junction Box, 6 Contacts/ 3 J Slots Blue Plug, 20' Blue Straight Cable		08139
SC-6W Sculcon Junction Box, 6 Contacts/ 3 J Slots Blue Plug, 30' Blue Coiled Cable		08159
6 Contact, 3 J-Slot Pull-Away Plug (SC-6WP) with 30' Coiled Cable		09672
SJ-6, Optic Socket, J560, Pullaway Plug		08184
REPLACEMENT PARTS		
Module Assembly	ST-35C-120 Multi-Point Optic Controller	08808
Module Assembly	ST-35C-240 Multi-Point Optic Controller	08647