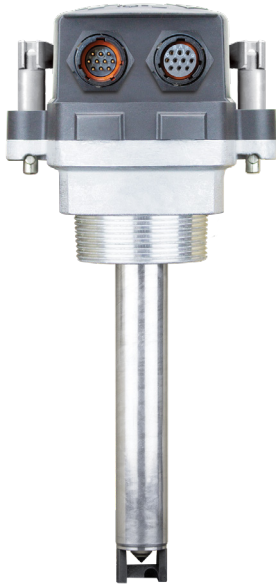




Scully CONNECT™ Plus

2-Wire & 5-Wire Quick Connect Overfill Prevention Sensors

Featuring Dynacheck® – Automatic and Continuous Self-Checking Circuitry



**Scully Connect Plus
Overfill Sensor**



IEC 61508 SIL 3 Capable

$\lambda_{DU}=1.0 FIT^*$ $\lambda_{SU}=116 FIT^*$

**FIT = Failure In Time (1x10⁹ failures per hour)*

DESCRIPTION

The Scully Connect Plus Sensor is an advanced tool-less overfill prevention sensor that allows for quick, easy and error-free installation of your overfill prevention system. It will save hours of installation time, prevent mis-wiring of the system, and allow for trouble-free connections. The patent pending sensor and cabling system has been designed for reliable operation and maximum safety.

FEATURES AND BENEFITS

- Time Saving Installation eliminates wiring errors since no wire crimping is required.
- No Tools Required when on top of a truck installing, removing, or replacing the sensor.
- IP69K Ingress Protection Rating. No ingress of dust and protection against close range, high pressure water spray down.
- Supports up to eight 2-Wire compartment sensors enabling use in a wide portfolio of trailers.
- External cap levers dual axis assembly now enable vertical rotation for easy installation and removal in tight spaces.
- Corrosion-Resistant Aluminum Alloy Levers stand up to harsh environments on the top of tank trailers.

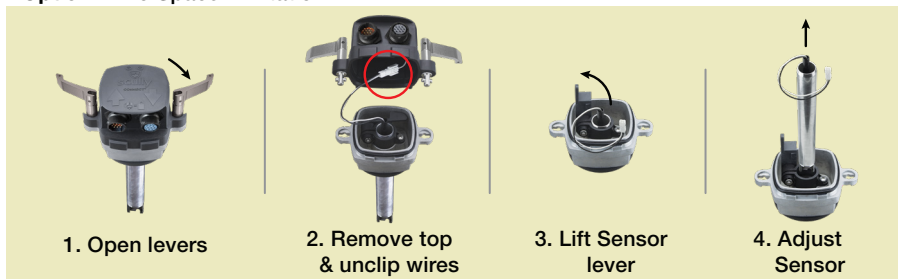
The sensor features a connector for simple sensor installation and replacement, and the new sensor levers allow for tool-less sensor access in tight spaces. The exterior cable connectors on the cap feature marine-grade watertight fittings. The sensor and cap have been extensively tested to withstand extreme environmental conditions.

Contact Scully sales or application team to configure a Scully Connect Plus kit. Information required about your tank or trailer include:

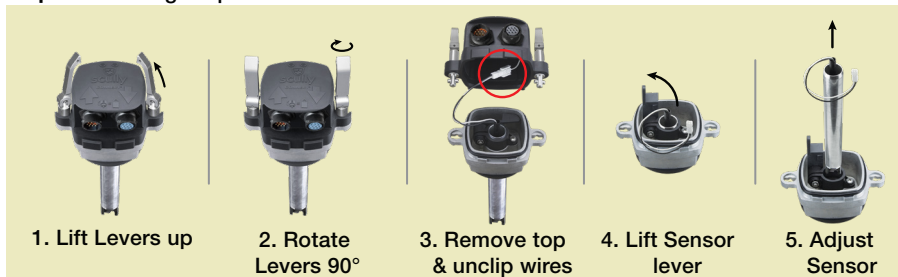
- Number of Compartments.
- Type of sensors (2-Wire or 5-Wire).
- Distance between man-lids per compartment.
- Distance between compartment one man-lid and the onboard controller or socket. A kit will be configured to your requirements and quoted for your reference.

OPENING AND ADJUSTING SENSOR

Option 1: No Space Limitation



Option 2: In Tight Spaces



CONNECTING



1. Insert cable connector

2. Turn ring to LOCK position



End Caps are connected to the final sensor in the sensor row



TECHNICAL SPECIFICATIONS

Operating Temp. Range: -40°C to +60°C.
(-40°F to +140°F).

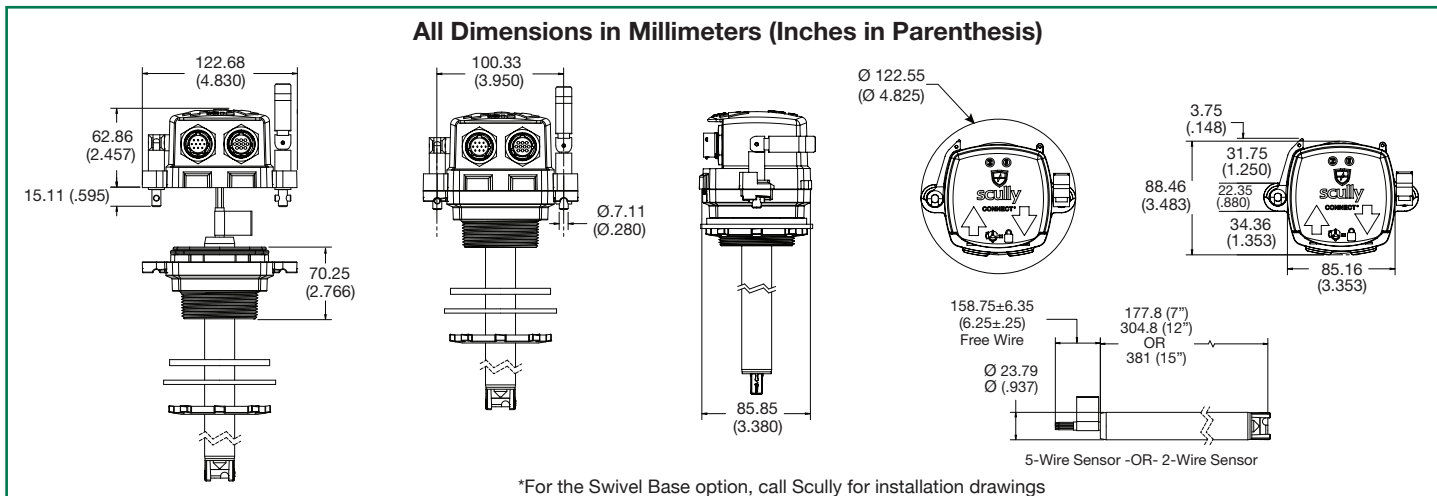
Petroleum Product Range: Gasoline blends & light fuel oils.

Exposed Materials: Aluminum, borosilicate (Pyrex®) glass, epoxy, conductive nylon and Viton® seals.

Level Repeatability: ±1 mm (±1/16").

Detection Level & Size: The detection level is adjustable, refer to sensor outline drawing, shown for 175mm shaft length.

Approvals: ATEX For use in EExd IIB T6, EEx ia IIB T6 hazardous locations.



ORDERING INFORMATION

Scully Connect Plus Sensor	Part Number
2-Wire, 7" Sensor, Standard Base BSP (Complete Sensor Assembly)	092000372
2-Wire, 12" Sensor, Standard Base BSP (Complete Sensor Assembly)	092000356
5-Wire, 7" Sensor, Standard Base BSP (Complete Sensor Assembly)	092000373
5-Wire, 12" Sensor, Standard Base BSP (Complete Sensor Assembly)	092000374
5-Wire, 15" Sensor, Standard Base BSP (Complete Sensor Assembly)	092000362
2-Wire, 7" Sensor, Swivel Base (Complete Sensor Assembly)	092000358
2-Wire, 12" Sensor, Swivel Base (Complete Sensor Assembly)	092000357
5-Wire, 7" Sensor, Swivel Base (Complete Sensor Assembly)	092000363
5-Wire, 12" Sensor, Swivel Base (Complete Sensor Assembly)	092000364
Termination Connector	092000350

Scully Connect Plus Blue 9-Conductor ADR Cable	Part Number
Double Ended Blue Cable- 1829mm (6')	235001806
Double Ended Blue Cable- 2438mm (8')	235001808
Double Ended Blue Cable- 3048mm (10')	235001810
Double Ended Blue Cable- 13658mm (12')	235001812
Double Ended Blue Cable- 4267mm (14')	235001814
Double Ended Blue Cable- 4877mm (16')	235001816
Double Ended Blue Cable- 5486mm (18')	235001818
Double Ended Blue Cable- 6096mm (20')	235001820
Double Ended Blue Cable- 7620mm (25')	235001825
Double Ended Blue Cable- 9144mm (30')	235001830
Double Ended Blue Cable- 10668mm (35')	235001835
Double Ended Blue Cable- 13716mm (45')	235001845
Single Ended Blue Cable- 9144mm (30')	235001730
Single Ended Blue Cable- 12192mm (40')	235001740
Single Ended Blue Cable- 15240mm (50')	235001750
Single Ended Blue Cable- 18288mm (60')	235001760

Scully Connect Plus Replacement Parts	Part Number
Replacement Cap with Lever 2-Wire	092000351
Replacement Cap with Lever 5-Wire	092000352
Replacement Base w/ BSP threads with Sensor Lever	092000265
2-Wire, 7" Sensor (Single Sensor)	092000006
2-Wire, 12" Sensor (Single Sensor)	092000007
5-Wire, 7" Sensor (Single Sensor)	092000008
5-Wire, 12" Sensor (Single Sensor)	092000009
On/Off Switch (IC3 kit)	58000

Copyright © 2024 Scully Signal Company. Scully Connect, Dynacheck, Dynamic Self-Checking, Dynamic Self-Testing, Faysafe, IntelliCheck, Intellitrol are registered trademarks of Scully Signal Company. All Rights Reserved. Specifications are subject to change without notice. Viton® is a registered trademark of DuPont. Pyrex® is a registered trademark of Corning.

02-13A
January 2024



Scully Signal Company
800 272 8559
sales@scully.com
Wilmington, MA, USA

Scully Systems Europe NV
+32 (0) 15 56 00 70
sales@scully.be
Mechelen, Belgium

Scully UK Ltd
+44 (0) 1606 553805
sales@scullyuk.com
Winsford Cheshire, UK

Scully Systems India
+91 9821799566
salesindia@scully.com
Maharashtra, India

