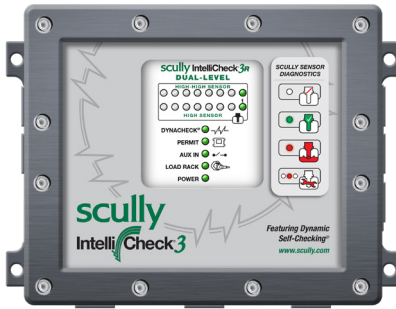




Scully IntelliCheck®3 Dual-Level Single Compartment Dual Level Overfill Monitoring System

Featuring Dynacheck® – Automatic and Continuous Self-Checking Circuitry



IntelliCheck® 3 Dual-Level

DESCRIPTION

The IntelliCheck®3 Dual-Level is a state of the art single compartment dual overfill monitoring system that is suitable for use on single compartment vehicles which require two levels of monitoring.

The IntelliCheck®3 Dual-Level System is pre-configured for ONE vehicle compartment to ensure maximum safety for proper sensor response should a high or high-high level (overfill) condition occur.

FEATURES & BENEFITS

The IntelliCheck®3 Dual-Level Overfill offers a range of features including:

- Dual-Level Detection Overfill prevention for one compartment.
- Auxiliary input.
- Supports Scully's Dynacheck® automatic and continuous self-checking circuitry.
- Bicolor LEDs providing complete system diagnostics, including sensor status, power, and rack connection.
- Corrosion-resistant housing.
- Scratch-resistant window.
- Compatible with Scully's SP-TO Two-Wire Optic Sensors.
- Intrinsically Safe and Non-Intrinsically Safe switch outputs.

DUAL-LEVEL SPECIFIC OPERATIONS

The IntelliCheck®3 Dual-Level System is pre-configured for ONE vehicle compartment to ensure maximum safety for proper sensor response should a high or a high-high level (overfill) condition occur. Only 2-Wire optic sensors are allowed.

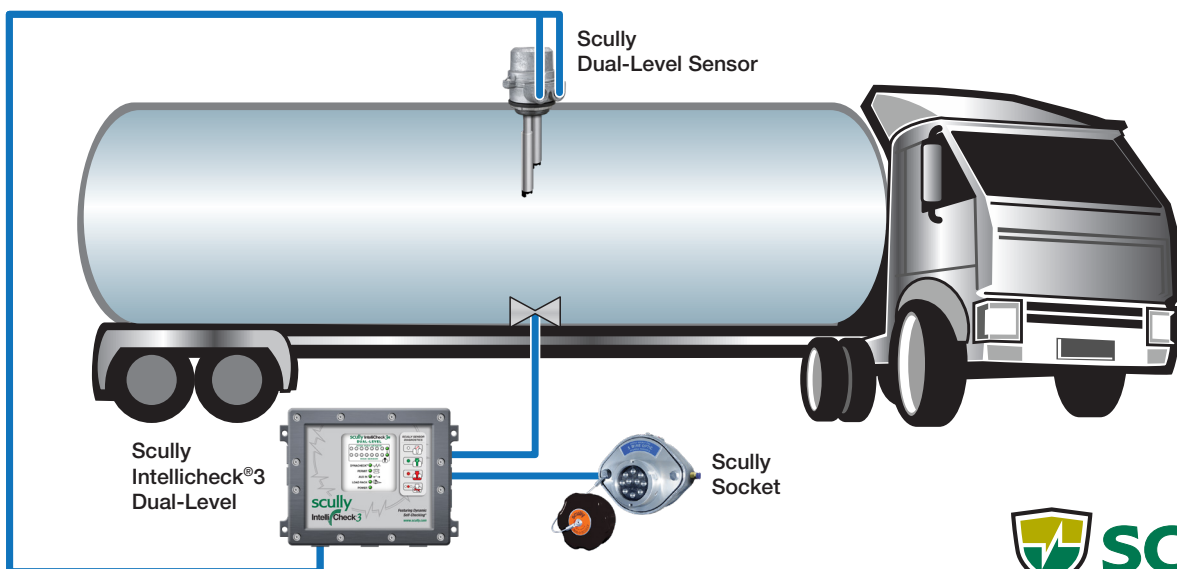
The monitor CANNOT be manually reprogrammed to any more compartments and the On Board Programming is disabled. The Dual-Level monitor is configured to detect two different fluid levels and provide two separate outputs, one output respectively for each level detected.

DYNACHECK® SAFETY

- Complete automatic and continuous checking of all system components for static operation.
- Complete system diagnostics.
- Visual indication of Dynacheck® self-checking, sensor status and fault conditions.
- Indicator for auxiliary switch operation, such as vapor interlock.
- Loading rack connection indicators.

ADVANCED OPTIC SENSING

- Scully optic sensors are used as the "eyes" of the IntelliCheck®3 to determine loading status.
- Each sensor is independently monitored and tested up to 30 times per second.
- Withstands extreme road and temperature conditions.
- IntelliCheck®3 Kits include Scully sensors - the most reliable sensors in the market with nearly double the warranty of any other sensor.



TECHNICAL SPECIFICATIONS

TEMPERATURE RANGE:

Operating: -40° to +60°C (-40° to +140°F).

Storage: -45° to +85°C (-50° to +185°F).

POWER REQUIREMENT:

Nominal Voltage: 12 to 24 VDC (-0.5, +8 VDC).

Consumption: 9.6 Watts max at 24 VDC.

4.8 Watts max at 12 VDC.

OUTSIDE DIMENSIONS:

235.2mm (9.26") wide,

173mm (6.81") high,

64.5mm (2.54") depth.

WEIGHT: 2.7 kg (6lb).

INTERFACE INPUTS:

- TB4 & TB5 Sensor Inputs: EN 13922 compliant 2-Wire optic only.
- TB3 Auxiliary: I.S. input switch closure less than 100 Ohms.

INTERFACE OUTPUTS:

- TB1: 2.0A at 32 VDC max Non-Intrinsically Safe F.E.T. switch.
- TB7: 2.0A at 32 VDC maximum Non-Intrinsically Safe relay.
- TB6 Rack interface: EN 13922 compliant I.S. interface for 2/5-Wire sensors.

APPROVALS:

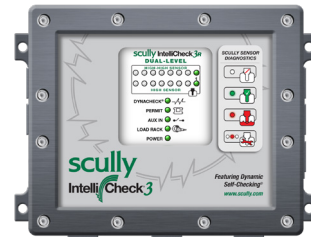
IntelliCheck®3 has safety approvals as an Intrinsically Safe monitoring device for use in:

ITS15ATEX58179

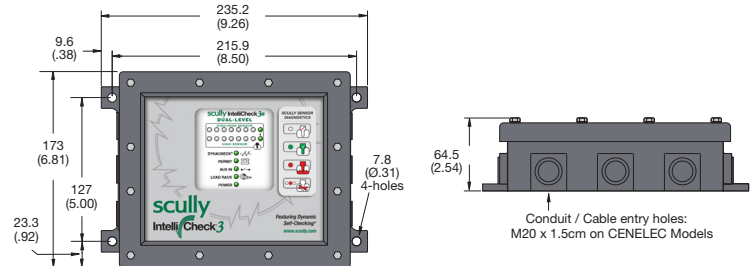
IECEXETL15.0004

II 2 G Ex eb mb [ia] IIB T4 Gb

-40°C ≤ Ta ≤ +60°C



All Dimensions in Millimeters
(Inches in Parenthesis)



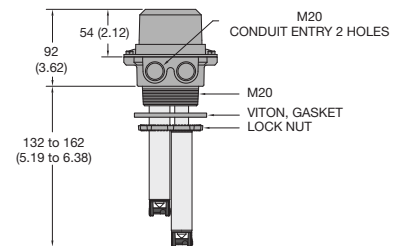
ORDERING INFORMATION - IntelliCheck®3

Description	Part Number
Dual-Level Level Monitor (M20)	09583
Dual-Level Replacement Module	09579

IntelliCheck®3 replacement parts available. Contact Scully for details.



All Dimensions in Millimeters
(Inches in Parenthesis)



ORDERING INFORMATION - DUAL-LEVEL SENSOR

Description	Part Number
SP-TO, 7" with M20 Holder	092000237
SP-TO, 12" with M20 Holder	092000238
SP-TO, 15" with M20 Holder	092000239
SP-TO, 7" Replacement Sensor	092000268
SP-TO, 12" Replacement Sensor	092000269
SP-TO, 15" Replacement Sensor	092000270
M20 Replacement Holder	092000276

Copyright © 2023 Scully Signal Company

Dynacheck, Dynamic Self-Checking, Dynamic Self-Testing, Faysafe, IntelliCheck, Intellitrol are registered trademarks of Scully Signal Company. All Rights Reserved. Specifications are subject to change without notice.

02-9A_DL
June 2023



Scully Signal Company
800 272 8559
sales@scully.com
Wilmington, MA, USA

Scully Systems Europe NV
+32 (0) 15 56 00 70
sales@scullyuk.com
Mechelen, Belgium

Scully UK Ltd
+44 (0) 1606 553805
sales@scullyuk.com
Winsford Cheshire, UK

Scully Systems India
+91 9821799566
salesindia@scully.com
Mumbai, India

