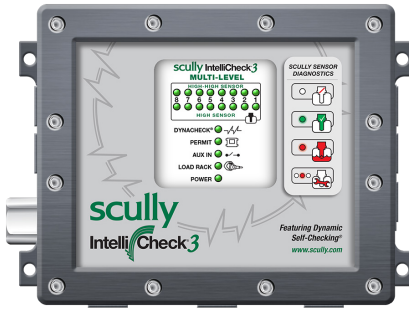




# Scully IntelliCheck®3 Multi-Level

## Complete Multiple Compartment Dual Level Overfill Monitoring System

Featuring Dynacheck® – Automatic and Continuous Self-Checking Circuitry



IntelliCheck® 3 Multi-Level

### DESCRIPTION

The IntelliCheck®3 Multi-Level is a state of the art multi compartment dual overfill monitoring system. The Multi-Level is the latest model in the IntelliCheck®3 family of superior on-board safety monitoring systems.

The IntelliCheck®3 Multi-Level is suitable for use on vehicles up to eight\* compartments which require two levels of monitoring, ensuring maximum safety for proper sensor response should a high or high-high level (overfill) condition occur.

\* For applications in excess of 5 compartments please contact Scully for guidance.

### FEATURES & BENEFITS

The IntelliCheck®3 Multi-Level Overfill offers a range of features including:

- Dual-Level Detection Overfill prevention for multiple compartments.
- Auxiliary input.
- Supports Scully's Dynacheck® automatic and continuous self-checking circuitry.
- Bicolor LEDs providing complete system diagnostics, including sensor status, power, and rack connection.
- Corrosion-resistant housing.
- Scratch-resistant window.
- Compatible with Scully's SP-TO Two-Wire Optic Sensors.
- Intrinsically Safe and Non-Intrinsically Safe switch outputs.
- Configurations available for trucks driving on the left side of the road, same part number with LM suffix.

### MULTI-LEVEL SPECIFIC OPERATIONS

The IntelliCheck®3 Multi-Level System is configurable for up to eight vehicle compartments to ensure maximum safety for proper sensor response should a high or a high-high level (overfill) condition occur. Only 2-Wire optic sensors are allowed.

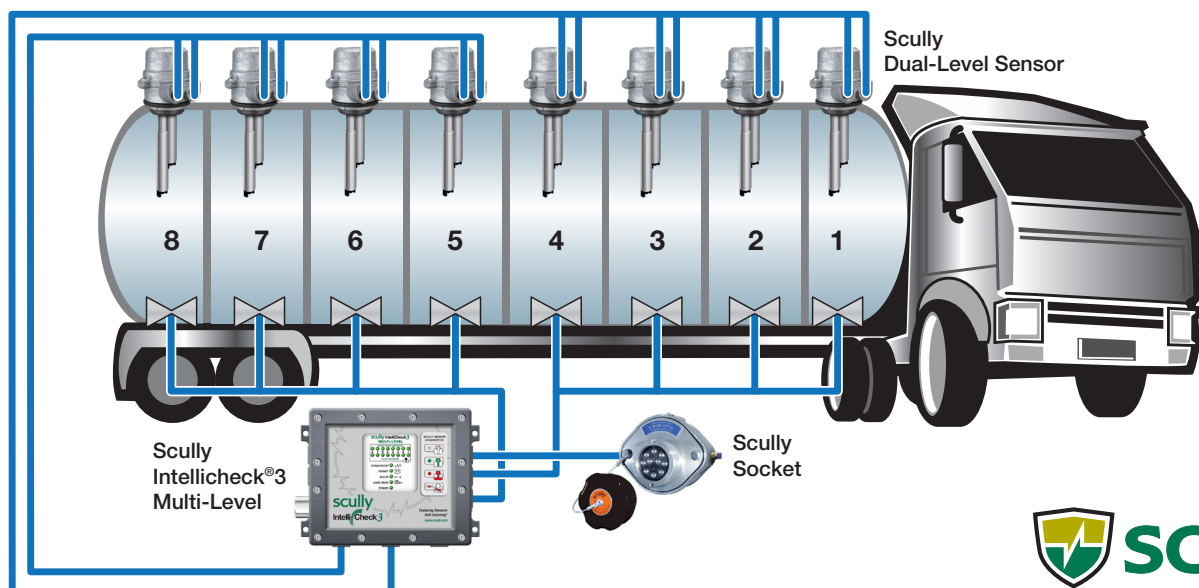
The Multi-Level monitor is configured to detect two different fluid levels and provides separate outputs. High level sensors control output to the sockets. Each High-High level sensor controls an individual valve.

### DYNACHECK® SAFETY

- Complete automatic and continuous checking of all system components for static operation.
- Complete system diagnostics.
- Visual indication of Dynacheck® self-checking, sensor status and fault conditions.
- Indicator for auxiliary switch operation, such as vapor interlock.
- Loading rack connection indicators.

### ADVANCED OPTIC SENSING

- Scully optic sensors are used as the "eyes" of the IntelliCheck®3 to determine loading status.
- Each sensor is independently monitored and tested up to 30 times per second.
- Withstands extreme road and temperature conditions.
- IntelliCheck®3 Kits include Scully sensors - the most reliable sensors in the market with nearly double the warranty of any other sensor.



## TECHNICAL SPECIFICATIONS

### TEMPERATURE RANGE:

Operating: -40° to +60°C (-40° to +140°F).

Storage: -45° to +85°C (-50° to +185°F).

### POWER REQUIREMENT:

Nominal Voltage: 12 to 24 VDC (-0.5, +8 VDC).

Consumption: 9.6 Watts max at 24 VDC.

4.8 Watts max at 12 VDC.

### OUTSIDE DIMENSIONS:

235.2mm (9.26") wide,

173mm (6.81") high,

64.5mm (2.54") depth.

**WEIGHT:** 2.7 kg (6lb).

### INTERFACE INPUTS:

- TB4 & TB5 Sensor Inputs: EN 13922 compliant 2-Wire optic only.
- TB3 Auxiliary: I.S. input switch closure less than 100 Ohms.

### INTERFACE OUTPUTS:

- TB1: 2.0A at 32 VDC max Non-Intrinsically Safe F.E.T. switch.
- TB7 Rack interface: EN 13922 compliant I.S. interface for 2-Wire and 5-Wire rack connection.
- TB6: Intrinsically Safe F.E.T. switch outputs. 200mA at 32 VDC max or 500mA at 16 VDC max.

### APPROVALS:

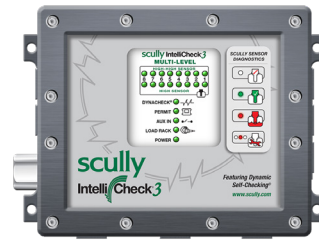
IntelliCheck®3 has safety approvals as an Intrinsically Safe monitoring device for use in:

ITS15ATEX58179

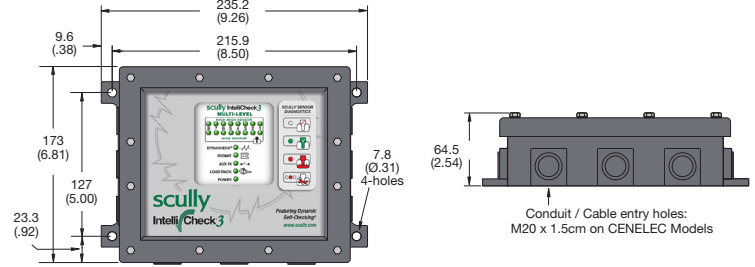
IECEXETL15.0004

II 2 G Ex eb mb [ia] IIB T4 Gb

-40°C ≤ Ta ≤ +60°C



All Dimensions in Millimeters  
(Inches in Parenthesis)

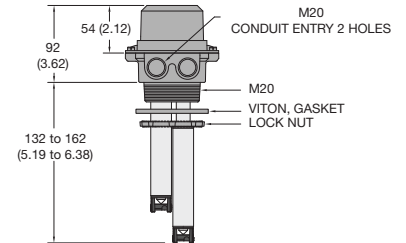


### ORDERING INFORMATION - IntelliCheck®3

Description	Part Number
Multi-Level Monitor (M20)	09541
Multi-Level Monitor (M20) w/Bypass	09541-BYP
Multi-Level Replacement Module	09539

Multi-Level Monitor, M20, Left Mount	09541LM
Multi-Level Monitor, M20, Left Mount w/Bypass	09541LM-BYP
Multi-Level Replacement Module, Left Mount	09539LM

Intellcheck®3 replacement parts available. Contact Scully for details.



All Dimensions in Millimeters  
(Inches in Parenthesis)

### ORDERING INFORMATION - DUAL-LEVEL SENSOR

Description	Part Number
SP-TO, 7" with M20 Holder	092000237
SP-TO, 12" with M20 Holder	092000238
SP-TO, 15" with M20 Holder	092000239
SP-TO, 7" Replacement Sensor	092000268
SP-TO, 12" Replacement Sensor	092000269
SP-TO, 15" Replacement Sensor	092000270
M20 Replacement Holder	092000276

Single sensor applications are available. Contact Scully for details.

Copyright © 2024 Scully Signal Company

Dynacheck, Dynamic Self-Checking, Dynamic Self-Testing, Faylsafe, IntelliCheck, Intellitrol are registered trademarks of Scully Signal Company. All Rights Reserved. Specifications are subject to change without notice.

02-9A\_ML  
August 2024



**Scully Signal Company**  
800 272 8559  
sales@scully.com

**Scully Systems Europe NV**  
+32 (0) 15 56 00 70  
info@scully.be

**Scully UK Ltd**  
+44 (0) 1606 553805  
sales@scullyuk.com

**Scully Systems India**  
+91 9821799566  
amoghe@scully.com