



Sculflow® Nozzles

Dependable Performance for Countless Deliveries

Setting Standards in Safety and Dependability since 1936.

Our leading brand best seller is the delivery Nozzle with its increased Hose Flexibility and Freedom of Movement



Sculflow® Nozzle

- The leading choice for light product, high volume deliveries.
- Reduced pressure drop allows for faster pumping speeds.
- Prevent closing shock to prolong truck equipment life.
- Feature leak-proof filling and no-drip operation.
- Original ball valve design and deadbolt locking handle.
- Advanced ball bearing design allows for easy rotation at all operating pressures.
- Teflon high recovery seal and shielded bearings for optimum field performance.
- No nipple required to attach hose with male style swivels.
- Lightweight aluminum and zinc construction.
- Wide variety of liquid product use.

Materials

- Aluminum body.
- Hard chrome plated brass ball valve.
- Teflon ball seat.
- Delrin ball follower.
- Aluminum and zinc swivel body.
- Teflon swivel seal.
- Viton seals.

Options

- Without swivel.
 - Sightglass.
 - Special chemicals.
- Consult Scully for part numbers.*

Flow Rates

- Used for deliveries up to 460 L.P.M.

Sculflow® Nozzle Ordering Information

Description	Part #
Sculflow Nozzle with 1.5" Outlet - photo A	05125
Sculflow Nozzle with Brass Swivel Outlet- photo B	094000001
Sculflow Nozzle with 1.5" Outlet & Sightglass- photo C	094000002
Sculflow Nozzle with Brass Swivel Outlet & Sightglass- photo D	094000003



05125
Sculflow Nozzle
with 1.5" Outlet- **A**



094000001
Sculflow Nozzle
with Brass Swivel Outlet- **B**



094000002
Sculflow Nozzle
with 1.5" Outlet
& Sightglass- **C**



094000003
Sculflow Nozzle
with Brass Swivel Outlet
& Sightglass- **D**

Sculflow® Nozzle Replacement Parts

Only genuine Scully replacement parts will ensure proper operation and prevent liabilities associated with spills.

Description	Part #
Sight Glass - photo E	05421
Nozzle Connector, Nut- photo F	36193
Nozzle Connector, Spud- photo G	36194
O-Rings for Nozzle Connector- photo H	92003
Sculflow Swivel- photo I	05900
Kit Handle & Latch Assembly (Qty.5)- photo J	11603
Nozzle Rebuild Kit- photo K	05416
Handle Upgrade Kit- photo L	11604
Seal Kit, no swivel parts- photo M	05415
Seal kit, to repair two swivels for Sculflow Nozzle- photo N	05859

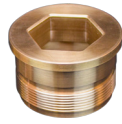
Note: Latch Replacement parts for Sculflow Standard and Com Nozzles pre 1981 are available. Contact Scully for details.



05421
Sight Glass- **E**



36193
Nozzle Connector,
Nut- **F**



36194
Nozzle Connector,
Spud- **G**



92003
Nozzle Connector,
O-Ring- **H**




05900
Sculflow Swivel- **I**




11603
Handle & Latch
Assembly Kit- **J**

05416 Nozzle Rebuild Kit- K




- Self Locking Screw
- Control Rod Washer
- Zinc Plated Screw (4)
- Bushing
- Control Rod Shim
- Plated Ball
- Retainer
- 11603-Handle & Latch Assembly Kit**
- Curved Washer
- Control Rod Viton O Ring
- Viton O Ring (6 Sizes)
- Seat
- Thrust Washer
- Wave Washer
- Complete Anti-Drip Valve Assembly

11604 Handle Upgrade Kit- L




- Control Rod Washer
- Curved Washer
- Control Rod Shim
- Viton O Ring (2 Sizes)
- Screw-Self Locking
- Control Rod Viton O Ring
- 11603-Handle & Latch Assembly Kit**
- Bushing
- Zinc Plated Screw (4)

05415 Nozzle Seal Kit- M



- Self Locking Screw
- Control Rod Washer
- Curved Washer
- E Ring
- Poppet & Shaft
- Seat
- Viton O Ring (6 Sizes)

05859 Seal Kit, Swivels for Sculflow Nozzle- N



- Viton O Ring
- Felt Washer
- Radial Bearing Assembly
- Large Bearing Washer
- Thrust Bearing
- Small Bearing Washer
- Retaining Ring