



Scully Sculflow® Nozzles & Hose Swivels

The Brand to Specify for Years of Dependable Performance



Sculflow® Nozzles

| Description | Part # |
|---|--------|
| SS, 1 1/2" X 1 1/2" BSP/5 PSI, Non-anodized | 05111 |
| SS, 1 1/2" X 1 1/2" BSP/3 PSI | 05125 |
| SS, 1 1/2" X 1 1/2" BSP/5 PSI | 05124 |

Sculflow® Nozzle Tightfill Hose Swivels

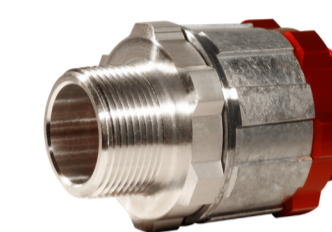
| Description | Part # |
|---------------------------------|--------|
| SS, 1 1/2" BSP X COM A | 05823 |
| SS, 1 1/2" BSP, A, Non-Anodized | 05876 |
| SS, 1 1/2" X 1 1/2" BSP, A SIZE | 05821 |
| SS, 1 1/2" BSP Male X COM A | 05870 |

Sculflow® Nozzle Outlets

| Description | Part # |
|-------------|--------|
| 1 1/2" BSP | 10257 |



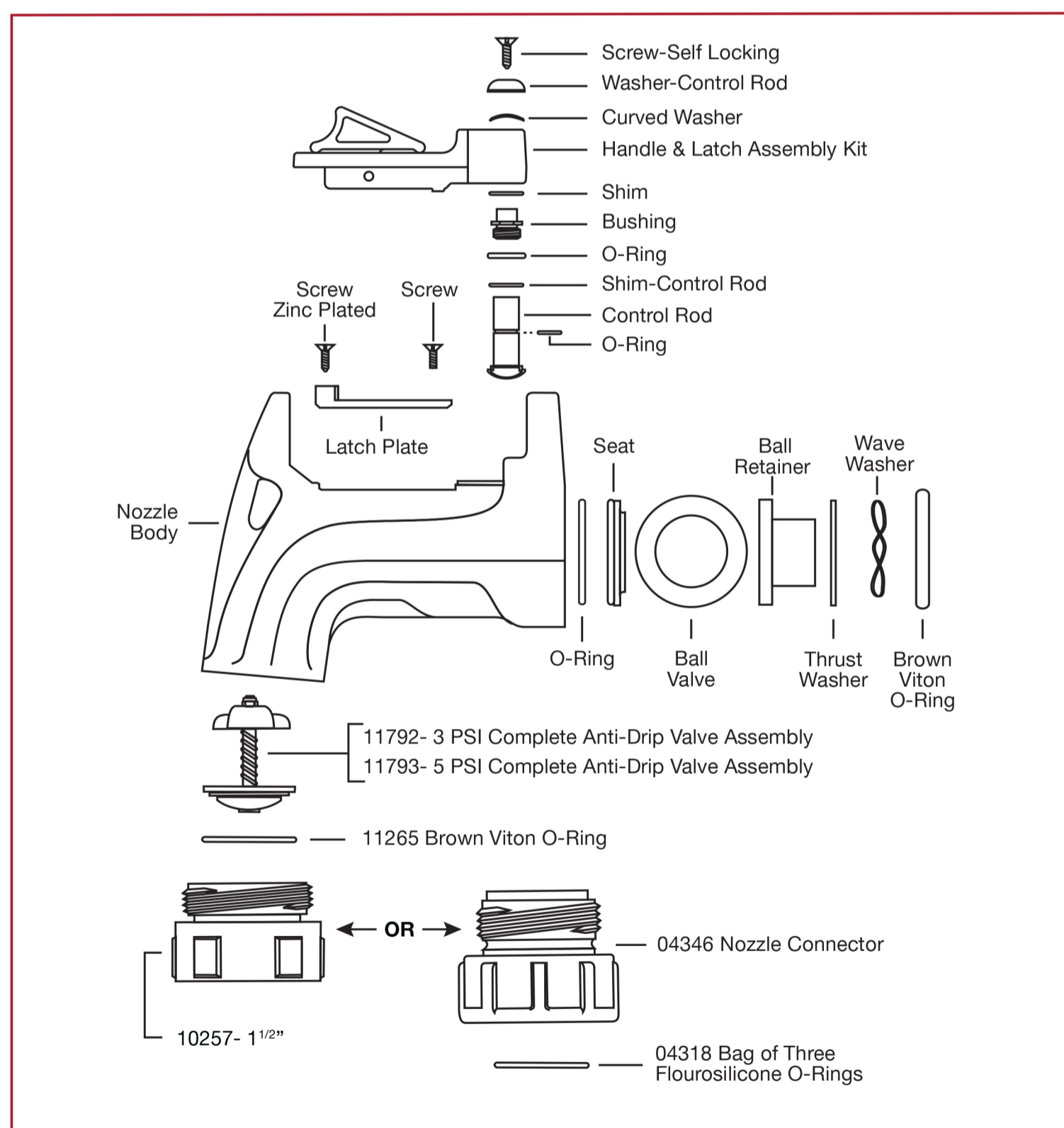
Female
Sculflow
Swivel



Male
Sculflow
Swivel

CAUTION: To ensure safe, spill-free deliveries, Scully recommends the immediate replacement of the entire swivel when it becomes worn or will not rotate smoothly. Swivel Repair/Rebuild Kits are no longer available.

Sculflow® Nozzle Diagram & Parts List



Sculflow® Nozzle Replacement Parts



05421
Sight Glass



11265
Outlet O-Ring



11503
Anti-Drip Valve

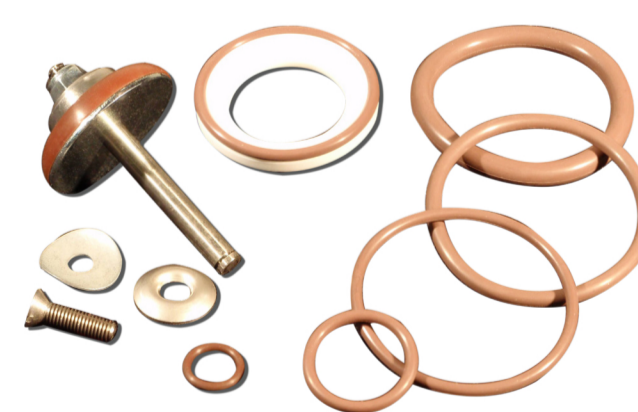


11603
Handle & Latch Assembly Kit

Sculflow® Nozzle Replacement Kits

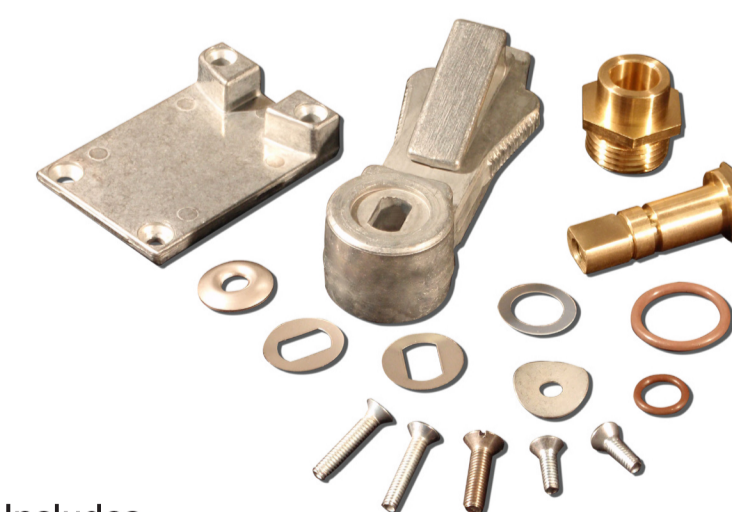
(Note: Nozzles must be repaired by experienced repair personnel according to specific Scully instructions to ensure proper performance.)

05415 Nozzle Seal Kit



Includes:
Washers, Viton O-Rings (6 Sizes),
Seat, E-Ring, Poppet & Shaft,
Self Locking Screw

11604 Handle Upgrade Kit



Includes:
Control Rod w/Viton O-Ring, Control Rod Shim,
Screws, Viton O-Rings (2 Sizes), Washers,
Bushing, Handle & Latch Assembly Kit

05416 Nozzle Rebuild Kit



Includes:
Control Rod Shim, Bushing, Retainer, Ball, Washers, Seat,
Screws, Viton O-Rings (6 Sizes), Anti-Drip Valve Assembly,
Control Rod w/Viton O-Ring,
Handle & Latch Assembly Kit





Scully Super Nozzles & Hose Swivels

The Brand to Specify for Years of Dependable Performance



Super Nozzles

| Description | Part # |
|--|--------|
| Less Swivel, 2" X 2" BSP/5 PSI | 05916 |
| Super Swivel, 1 1/2" X 1 1/2" BSP/5 PSI | 05925 |
| Super Swivel, 1 1/2" X 2" BSP/5 PSI | 05930 |
| Super Swivel, 2" X 1 1/2" BSP/5 PSI | 05915 |
| Super Swivel, 2" X 2" BSP, B/5 PSI, Non Anodized | 05945 |
| Super Swivel, 2" X 2" BSP/5 PSI | 05932 |
| Super Swivel, 2" X 2" MALE BSP/5 PSI | 05939 |
| Super Swivel, 1 1/2" X 1 1/2" BSP, B/5 PSI, Non Anodized | 05944 |

Super Nozzle Outlets

| Outlet Style | Outlet Thread | Male Outlet Thread | Part # |
|--------------|---------------|--------------------|--------|
| FEMALE | 1 1/2" | COM-B | 11119 |
| FEMALE | 2" | COM-B | 11120 |

Super Nozzle Tightfill Hose Swivels

| Description | Part # |
|---|--------|
| Super Swivel, 1 1/2" BSP X COM B | 05825 |
| Super Swivel, 2" BSP X COM B | 05827 |
| Super Swivel, 2" X 2" BSP, B SIZE | 05829 |
| Super Swivel, 2" BSP, Male X COM B | 05861 |
| Super Swivel, 1 1/2" BSP, COM B, Non-Anodized | 05877 |
| Super Swivel, 2" BSP, COM B, Non-Anodized | 05878 |

COM-B Outlet Thread screws directly into the Super Nozzle body only



Female Super Nozzle Swivel

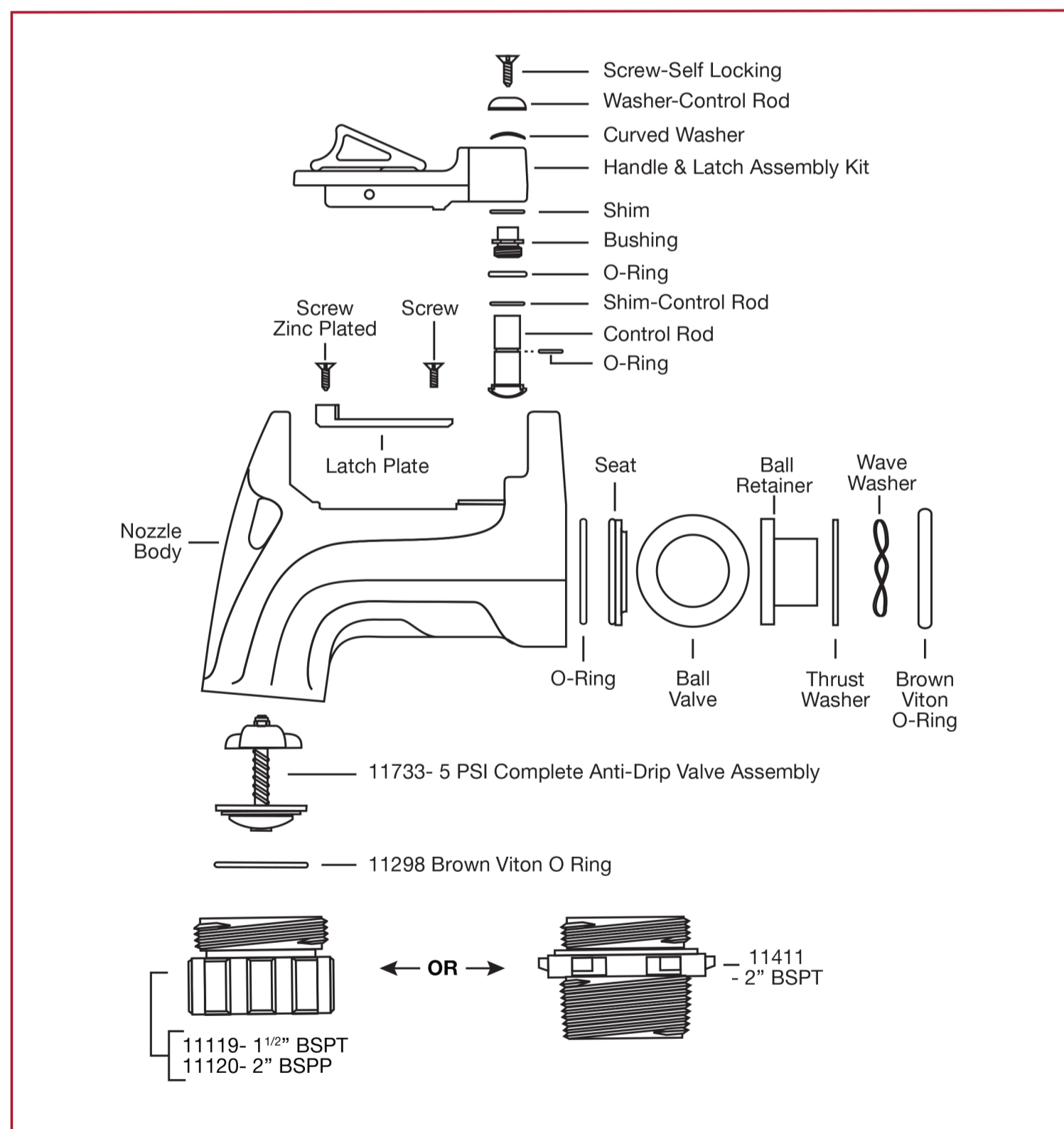


Male Super Nozzle Swivel

Super Nozzle Non Swiveling Inlets

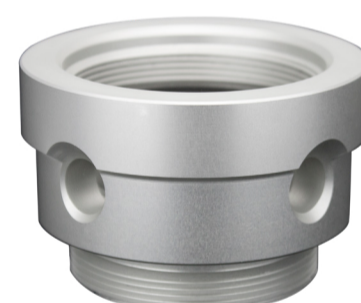
| Description | Part # |
|---------------|--------|
| 1 1/2" BSP | 10276 |
| 2" BSP Female | 11182 |
| 2" BSP Male | 11415 |

Super Nozzle Diagram & Parts List



CAUTION: To ensure safe, spill-free deliveries, Scully recommends the immediate replacement of the entire swivel when it becomes worn or will not rotate smoothly. Swivel Repair/Rebuild Kits are no longer available.

Super Nozzle Replacement Parts



05420 Sight Glass



11298 Outlet O-Ring



11733 5 PSI, Anti-Drip Valve



11603 Handle & Latch Assembly Kit

Super Nozzle Replacement Kits

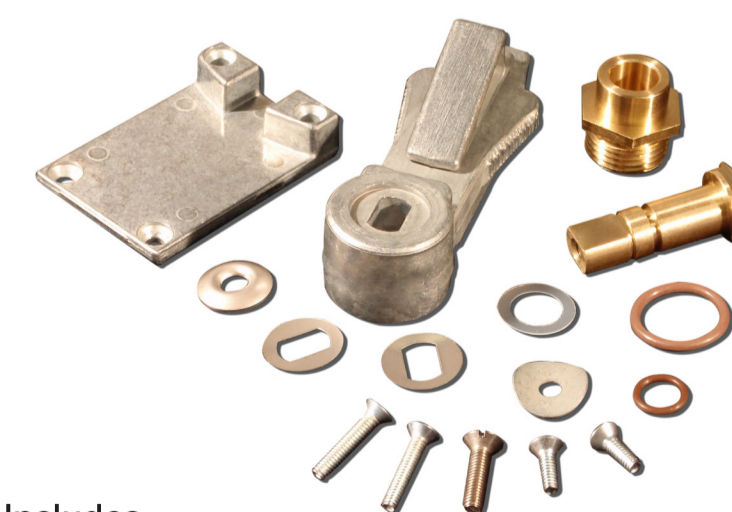
(Note: Nozzles must be repaired by experienced repair personnel according to specific Scully instructions to ensure proper performance.)

05933 Nozzle Seal Kit



Includes:
Self Locking Screw, Washers, Seat, Viton O-Rings (4 Sizes), Retainer

11604 Handle Upgrade Kit



Includes:
Control Rod w/Viton O-Ring, Control Rod Shim, Screws, Viton O-Rings (2 Sizes), Washers, Bushing, Handle & Latch Assembly Kit

05934 Nozzle Rebuild Kit



Includes:
Control Rod Shim, Bushing, Retainer, Ball, Washers, Seat, Screws, Viton O-Rings (4 Sizes), Anti-Drip Valve Assembly, Control Rod w/Viton O-Ring, Handle & Latch Assembly Kit

