

## CASE STUDY

Road Terminal Equipment Upgrade



### FOR MORE INFORMATION:

Mark Price

Manager Technical Sales and Service

Email: [mark.price@scullyuk.com](mailto:mark.price@scullyuk.com)

Phone: +44 (0)1606 553805

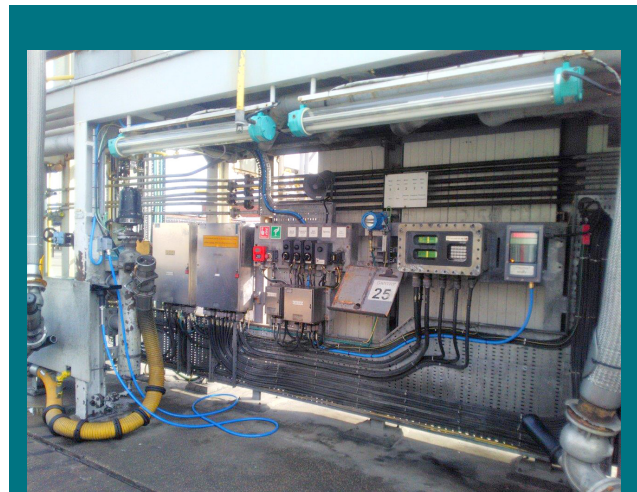
## EFFICIENT AND TIMELY UPGRADE OF 17 TERMINAL LOADING BAYS WITH SCULLY INTELLITROL®2

### OVERVIEW

The UK's largest independent bulk liquid storage company has an extensive infrastructure and supply chain network to ensure the safe, efficient delivery of critical fuels. The company's road terminal is a major hub for processing and delivering diesel, jet, and V-Power gasolines throughout the company's distribution area.

After the company assumed management of the road terminals, an extensive review of key performance indicators and assets was conducted. To ensure the company was on the cutting edge of safety, they sought to invest in capital improvements, including the upgrade of terminal safety equipment at their 17 gantries.

As the leader in their industry, the company wanted an equivalent industry-leading partner to help them fulfill their health and safety goals. The company selected Scully, due to our extensive industry experience, reputation for world-class safety equipment, and reliability of the Scully Biclops III systems that were originally installed at the terminal in 1988.



Intellitrol®2 has a SIL2 functional safety rating resulting in increased efficiency, less downtime, and cost savings.

### CHALLENGES

The company's desire to ensure the highest levels of health and safety—therefore reducing risk and liability—combined with new regulations coming into play, was the impetus for upgrading existing safety equipment. The company also wanted to be proactive as new biofuels emerge, further diversifying the type and volume of liquids the terminals handle.

With the terminal receiving 300-500 trucks per day—handling diesel, jet, and V-Power fuels—it was critical that the upgrades cause minimal disruption. Working with Scully's delivery schedule, they devised an approach to complete the equipment upgrades in a timely manner while keeping operations flowing smoothly.



## SOLUTIONS

Scully worked closely with the company to plan and execute the terminal loading bay upgrades. Scully Intellitrol®2 was installed at each of the 17 bays. To minimize disruption to fueling operations of the same product, two bays of different fuel types were completed each day. Each terminal upgrade took approximately three hours, and the *entire project was completed in just nine days.*

After installation was complete, the company asked several customers with varying types of tankers to test the new system to ensure it was compatible with their trucks. No issues were identified, and the company found the customer testing to be a valuable step in ensuring smooth operations, and plans to incorporate the testing phase into future upgrades.



## KEY BENEFITS & OUTCOME

The company cites Scully's extensive expertise, efficient planning, and timely execution as the reasons for the seamless transition. They are very pleased with the outcome and have received positive feedback from users who find the newly installed Scully system easy to use and responsive.

The terminal engineer says that the new system is lighter and more ergonomic. Drivers appreciate the visual identification system located in the front of the bay as it makes it easier to identify the permit state and to know when it is safe/not safe to move their trucks.

Partnering with Scully, this terminal equipment customer successfully upgraded 17 terminal loading bays and is well on the road to ensuring the health and safety of its facilities, drivers, and the environment.



**For more information on Intellitrol®2 and other Scully systems, visit [www.scully.com](http://www.scully.com) or click below:**

[Intellitrol®2 Webpage](#)

[Intellitrol®2 Datasheet](#)

[All Scully Product Resources](#)



Scully Signal Company has over 30 years of Overfill Prevention Systems and electronic liquid handling experience providing the ultimate dependability, service, and safety. How can we help you better handle your terminal equipment, overfill prevention, grounding, and safety needs? [Contact us](#) now to explore your options.

**To learn more, visit:** [www.scully.com](http://www.scully.com)

**For product information, call:** 1-800-272-8559

**Email Scully International Headquarters at:** [sales@scully.com](mailto:sales@scully.com)

