



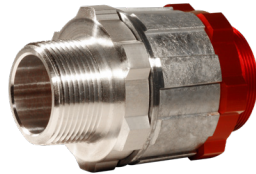
# Nozzle Tightfill Hose Swivels

## Increased Hose Flexibility and Freedom of Movement

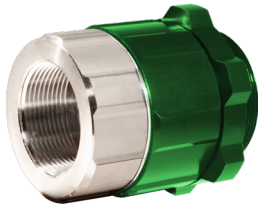
*Setting Standards in Safety and Dependability since 1936.*



Female COM A  
Sculflow Swivel



Male COM A  
Sculflow Swivel



Female COM B  
Super Nozzle Swivel



Male COM B  
Super Nozzle Swivel

### DESCRIPTION

Scully delivery nozzles are considered by many to be the finest in the world. They are used for delivering heating oils, lubricants, gasolines, jet fuels, chemicals and other liquids. Their durable construction allows them to provide dependable performance over countless deliveries. Scully nozzles offer optimum pumping speed and control to improve your delivery efficiency.

### TIGHTFILL HOSE SWIVELS

- Advanced ball bearing design allows for easy rotation at all operating pressures.
- No nipple required to attach hose with male style swivels.
- Lightweight aluminum and zinc construction.
- Teflon high recovery seal and shielded bearings for optimum field performance.
- Wide variety of liquid product use.

### ORDERING INFORMATION

Inlet Style	Inlet Pipe Size	Outlet Thread	Part Number
FEMALE	1 1/4"	COM-A	05815
FEMALE	1 1/4"	1 1/4" Male NPT	05817
FEMALE	1 1/4"	1 1/2" Male NPT	05818
FEMALE	1 1/2"	COM-A	05816
FEMALE	1/2"	1 1/4" Male NPT	05819
FEMALE	1 1/2"	1 1/2" Male NPT	05820
MALE	1 1/4"	COM-A	05865
MALE	1 1/4"	1 1/4" Male NPT	05863
MALE	1 1/2"	COM-A	05868
MALE	1 1/2"	1 1/4" Male NPT	05866
MALE	1 1/2"	1 1/2" Male NPT	05867
FEMALE	1 1/2"	COM-B	05824
FEMALE	2"	COM-B	05826
FEMALE	2"	2" Male NPT	05828
MALE	2"	COM-B	05862
MALE	2"	2" Male NPT	05874

*COM-A outlet thread screws directly into the Sculflow Nozzle body only.*

*COM-B outlet thread screws directly into the Super Nozzle body only.*

Copyright © 2019 Scully Signal Company. Dynacheck, Dynamic Self-Checking, Dynamic Self-Testing, Faysafe, Golden Gallon, IntelliCheck, Intellitrol, Mark IV, Mark V, Sculclamp, Sculflow, Sculmatic, Twis-Lok, Unifil, Ventafil, Ventalarm, V.I.P. and Whistler are registered trademarks of Scully Signal Company. All Rights Reserved. Specifications are subject to change without notice.

August 2019



**Scully Signal Company**  
70 Industrial Way  
Wilmington, MA 01887, USA  
800 272 8559 • sales@scully.com

**Scully Systems Europe NV**  
Maanstraat 25  
2800 Mechelen, Belgium  
+32 (0) 15 56 00 70 • info@scully.be

**Scully UK Ltd**  
Meridian House, Unit 33  
37 Road One Winsford Industrial Estate,  
Winsford Cheshire CW7 3QG, UK  
+44 (0) 1606 553805 • sales@scullyuk.com

