



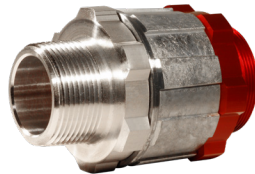
Nozzle Tightfill Hose Swivels

Increased Hose Flexibility and Freedom of Movement

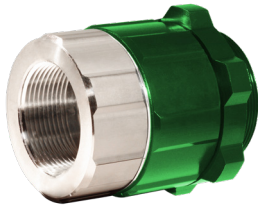
Setting Standards in Safety and Dependability since 1936.



Female Sculflow Swivel



Male Sculflow Swivel



Female Super Nozzle Swivel



Male Super Nozzle Swivel

DESCRIPTION

Scully delivery nozzles are considered by many to be the finest in the world. They are used for delivering heating oils, lubricants, gasolines, jet fuels, chemicals and other liquids. Their durable construction allows them to provide dependable performance over countless deliveries. Scully nozzles offer optimum pumping speed and control to improve your delivery efficiency.

TIGHTFILL HOSE SWIVELS

- Advanced ball bearing design allows for easy rotation at all operating pressures.
- No nipple required to attach hose with male style swivels.
- Lightweight Aluminium and zinc construction.
- Teflon high recovery seal and shielded bearings for optimum field performance.
- Wide variety of liquid product use.

ORDERING INFORMATION-SCULFLOW

Description	Part Number
SS, 1.5" BSP X COM A	05823
SS, 1.5" BSP, A, Non-Anodized	05876
SS, 1.5" X 1.5" BSP, A SIZE	05821
SS, 1.5" BSP Male X COM A	05870

ORDERING INFORMATION-SUPER NOZZLE

Description	Part Number
SS, 1.5" BSP X COM B	05825
SS, 2.0" BSP X COM B	05827
SS, 2.0" X 2.0" BSP, B SIZE	05829
SS, 2.0" BSP, Male X COM B	05861
SS, 1.5" BSP, COM B, Non-Anodized	05877
SS, 2.0" BSP, COM B, Non-Anodized	05878

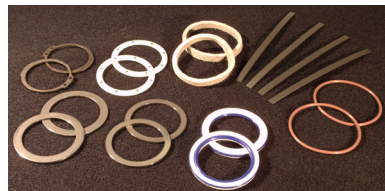
COM-A outlet thread screws directly into the Sculflow Nozzle body only.
COM-B outlet thread screws directly into the Super Nozzle body only.

REPLACEMENT KITS

Description	Part Number
Seal kit, to repair two "A" series swivels for Sculflow Nozzle	05859
Seal kit, to repair two "B" series swivels for Super Nozzle	05860



05859 Seal Kit, Swivels for Sculflow Nozzle



05860 Seal Kit, Swivels for Super Nozzle

Rev A
January 2016

Copyright © 2015 Scully Signal Company. Dynacheck, Dynamic Self-Checking, Dynamic Self-Testing, Faysafe, Golden Gallon, IntelliCheck, Intellitrol, Mark IV, Sculclamp, Sculflow, Sculmatic, Twis-Lok, Unifil, Ventafil, Ventalarm, V.I.P. and Whistler are registered trademarks of Scully Signal Company. All Rights Reserved. Specifications are subject to change without notice.



Scully Signal Company
70 Industrial Way
Wilmington, MA 01887, USA
800 272 8559 • sales@scully.com

Scully Systems Europe NV
Maanstraat 25
2800 Mechelen, Belgium
+32 (0) 15 56 00 70 • info@scully.be

Scully UK Ltd
Meridian House, Unit 33
37 Road One Winsford Industrial Estate,
Winsford Cheshire CW7 3QG, UK
+44 (0) 1606 553805 • sales@scullyuk.com

